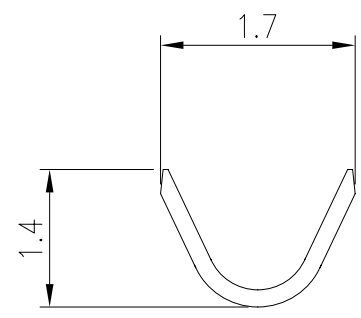
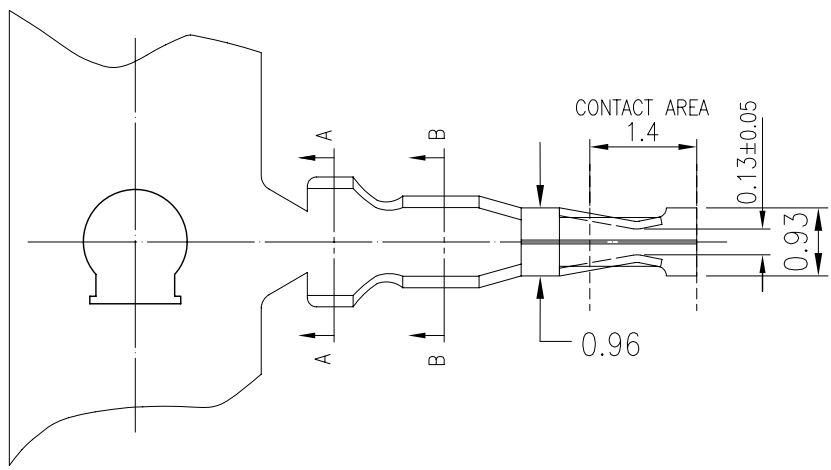


A B C D E F

1



A-A SECTION

NOTES:

1. MATERIAL:PHOSPHOR BRONZE THICKNESS:0.15
2. PLATING:50u"MIN NICKEL UNDER PLATING OVER ALL,
□:3u"GOLD OVER ALL
L:Pure Tin(60u" MIN.)
1:1u"GOLD OVER ALL
C:15u"MIN GOLD ON CONTACT AREA
GOLD FLASH ON ELSE PORTION
- 3.Wire Range: Suitable for AWG#28~32
- 4.Insulation O.D: 1.0mm(max)
- 5.Q'TY: 15,000 pcs/roll

P/N LEGEND

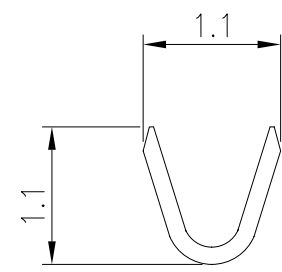
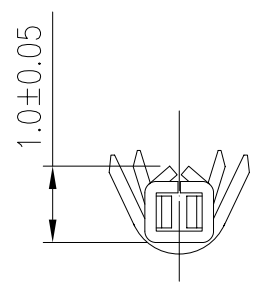
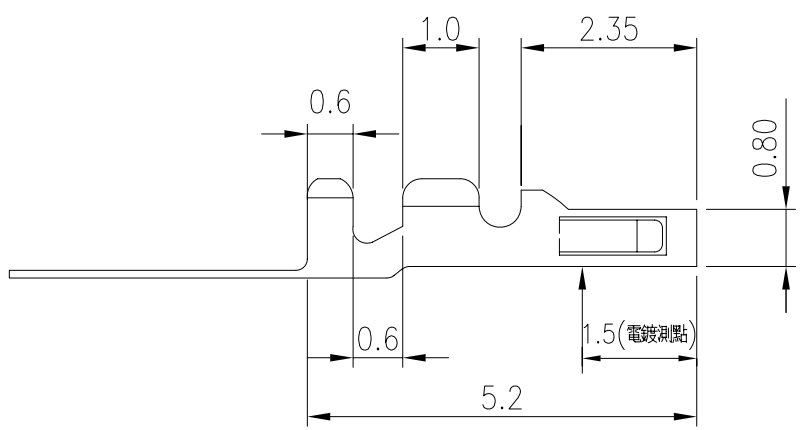
88267-W-X

PLATING

- :3 u" Gold over all
- L:Pure Tin(60 u" min.)
- 1:1u" Gold over all
- C:15u" Gold on contact

2

3



B-B SECTION

4

5

| | | | | | | |
|---|-----------------------|---------------------|-------------|--|------------------------------------|----------------------|
| QUALITY SYMBOLS MAJOR Ⓜ CRITICAL Ⓢ GENERAL TOLERANCES (UNLESS SPECIFIED) X. ±0.5 .X ±0.25 .XX ±0.15 .XXX ±0.1 ANGLES ±2° | DRAWN BY SHI,YANAN | DATE 18/08/10 | | | | |
| | CHECKED BY BRAVE | DATE 18/08/10 | | | TITLE 1.25mm pitch WTB Terminal | |
| | APPROVED BY BRAVE | DATE 18/08/10 | UNITS mm | | SIZE A4 | DWG NO. 88267-W-X |
| | SCALE 2:1 | SHEET NO. 1 OF 1 | REV H | | PART NO. SEE NOTES | |

B C D E F